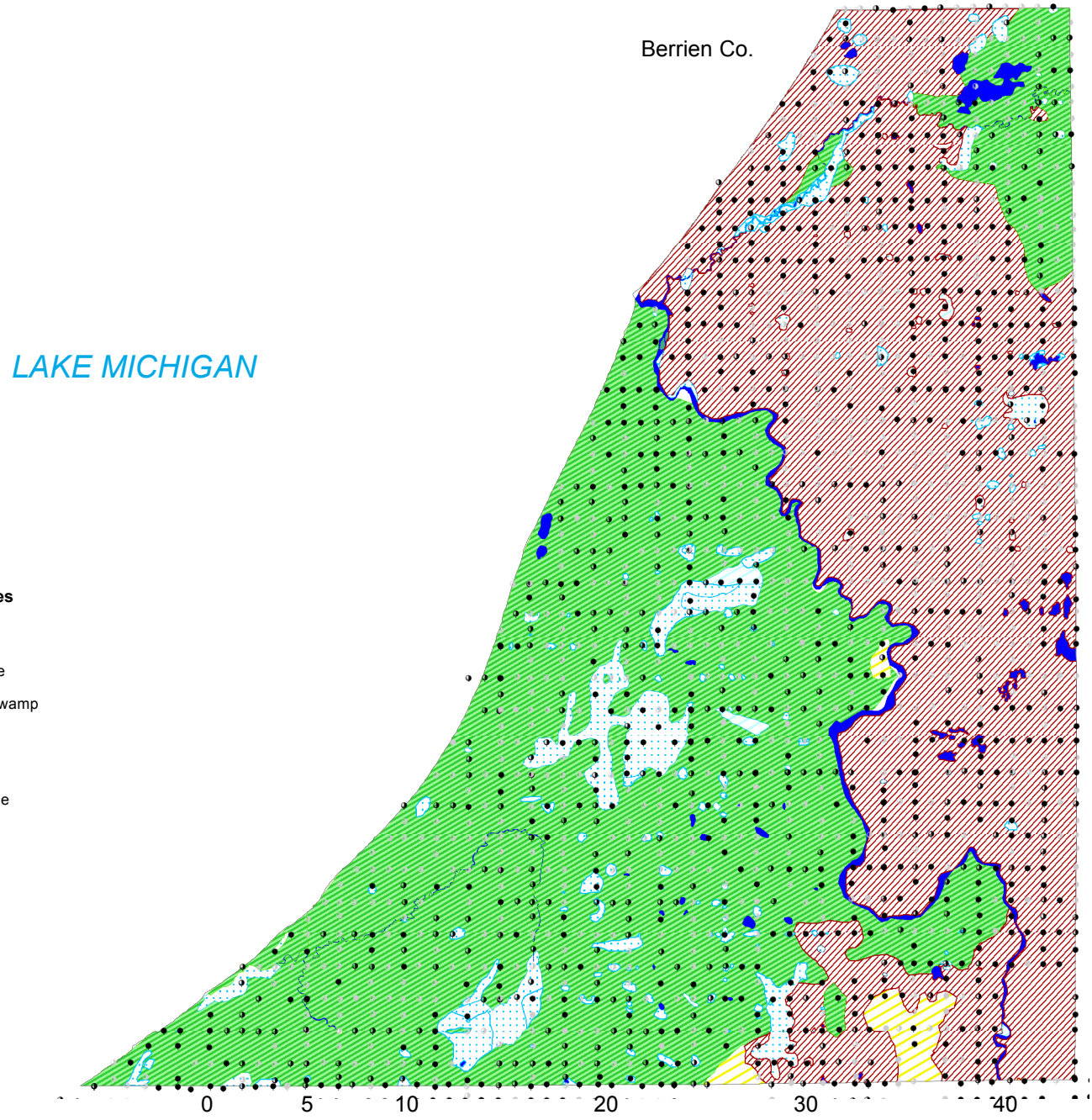


Vegetation of the Southwest Michigan as mapped by the Public Land Survey 1828-1842



- Tree density classes**
- >0-10 trees/hectare
 - >10-50 trees/ha
 - >50-100 trees/ha
 - >100 trees/ha

- Vegetation types**
- barrens
 - river/lake
 - marsh/swamp
 - prairie
 - timber
 - wetprairie

Funding Source: The Morton